

Protecting the Red Squirrel

THE
ORIGAMI
RED
SQUIRREL

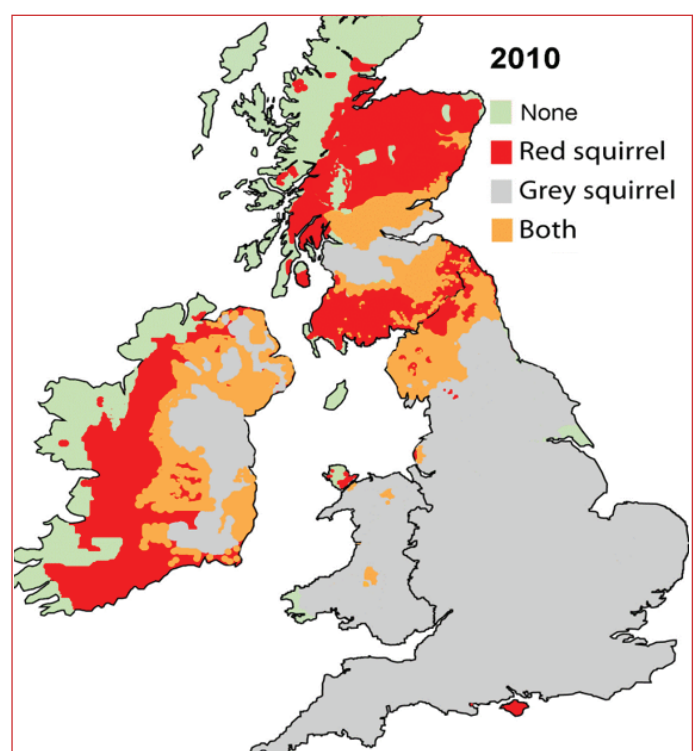
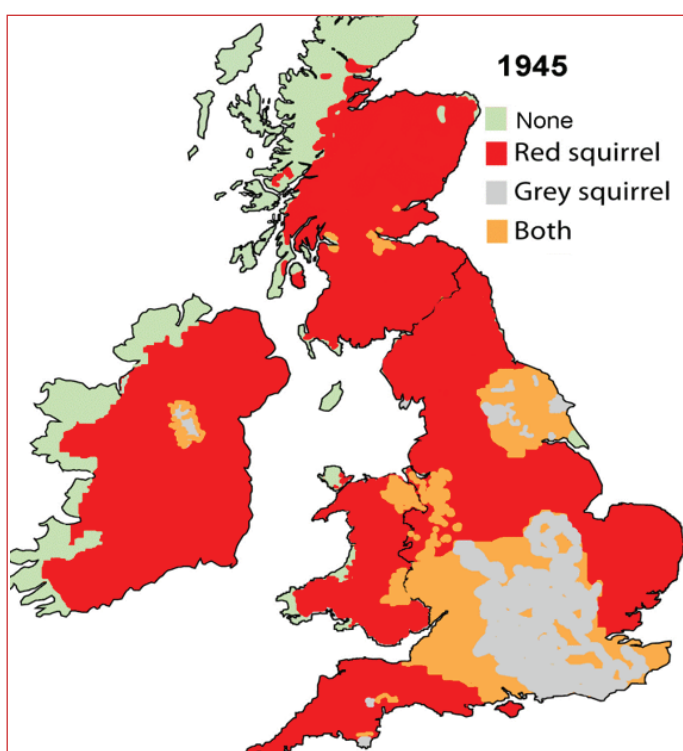
PROJECT



The purpose of this leaflet is to promote conservation and raise awareness of the rapid decline of the UK Red Squirrel population.

The Red Squirrel species has been native to the UK for around 10,000 years. Red squirrels have been historically widespread across the British Isles with Grey squirrels introduced to the UK from North America by the Victorians in the 1800s.

Many scientific studies show that the introduction of the grey squirrel has been the major factor in the red squirrel's decline over the past century. Competition for food and shelter and infection through the squirrel pox virus (which grey squirrels can transmit to red squirrels) has led to dwindling numbers.



Red and grey squirrel distribution in the British Isles in 1945 and 2010. Copyright RSST

The population of grey squirrels is currently estimated at 2.5 million. Red squirrels total only 140,000, the majority residing in Scotland and the rest dispersed in and around the UK. **Formby** represents one of five strongholds.

Who are helping the Reds?

The Wildlife Trust for Lancashire, Manchester and North Merseyside has been working hard for many years to help stop the extinction of red squirrels. Thanks to the perseverance and dedication of volunteers and project officers, the Red Squirrel has been steadily increasing but there is still plenty of work to be done.

How can you Help?

- Become a Volunteer for your local trust. You will make new friends, learn new skills, and help wildlife along the way
- Report sightings of red and grey squirrels
- Join **Red Alert Lancashire and Merseyside!**
This is a long-established local group performing amazing red squirrel conservation work.

Contact details for Red Squirrel Project and Red Alert group:

Telephone | 0151 920 3769

Email | red.squirrel@lancswt.org.uk

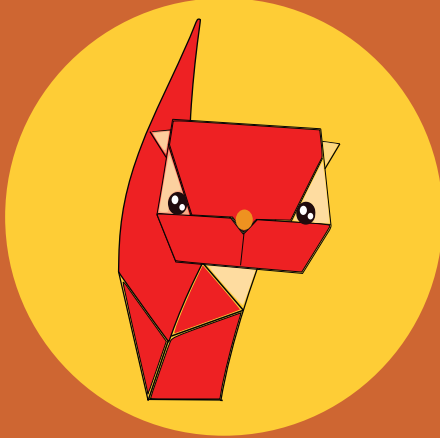


HOW TO FOLD AN ORIGAMI RED SQUIRREL

Folding Tips

- Look ahead – before you make your first fold, take a look through all the steps, to see how your work will take shape
- Be precise – if you start well, it will continue well
- Make good strong folds – this gives strength
- Have fun! Be kind to yourself, be patient and enjoy the challenge

TIP: If you haven't done Origami before we recommend you do some practice before doing the red squirrel. (You can download free our PDF booklet **Get started with Origami** (Find it on www.origamipulse.com go to 'resources').



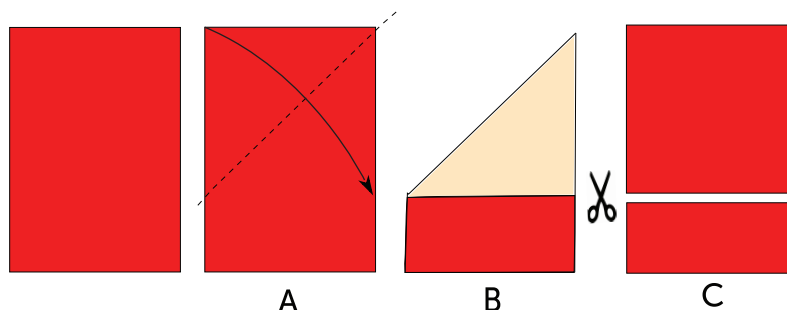
MATERIALS

- You will need a sheet of A4 paper (21 cm x 29.7 cm).
- Glue
- Scissors
- 2 small black circles for the eyes
- 1 small brown circle for the nose
- White pen for the dots on the eyes

*** Wrapping recycled paper that is red on one side and light brown on the other is ideal for the Red Squirrel. You could use a red sheet of A4 and make the squirrel all red. You could colour a plain white A4 photocopy paper red on one side and light brown on the other. For the eyes and nose you could use a black pen or even use googly eyes.**

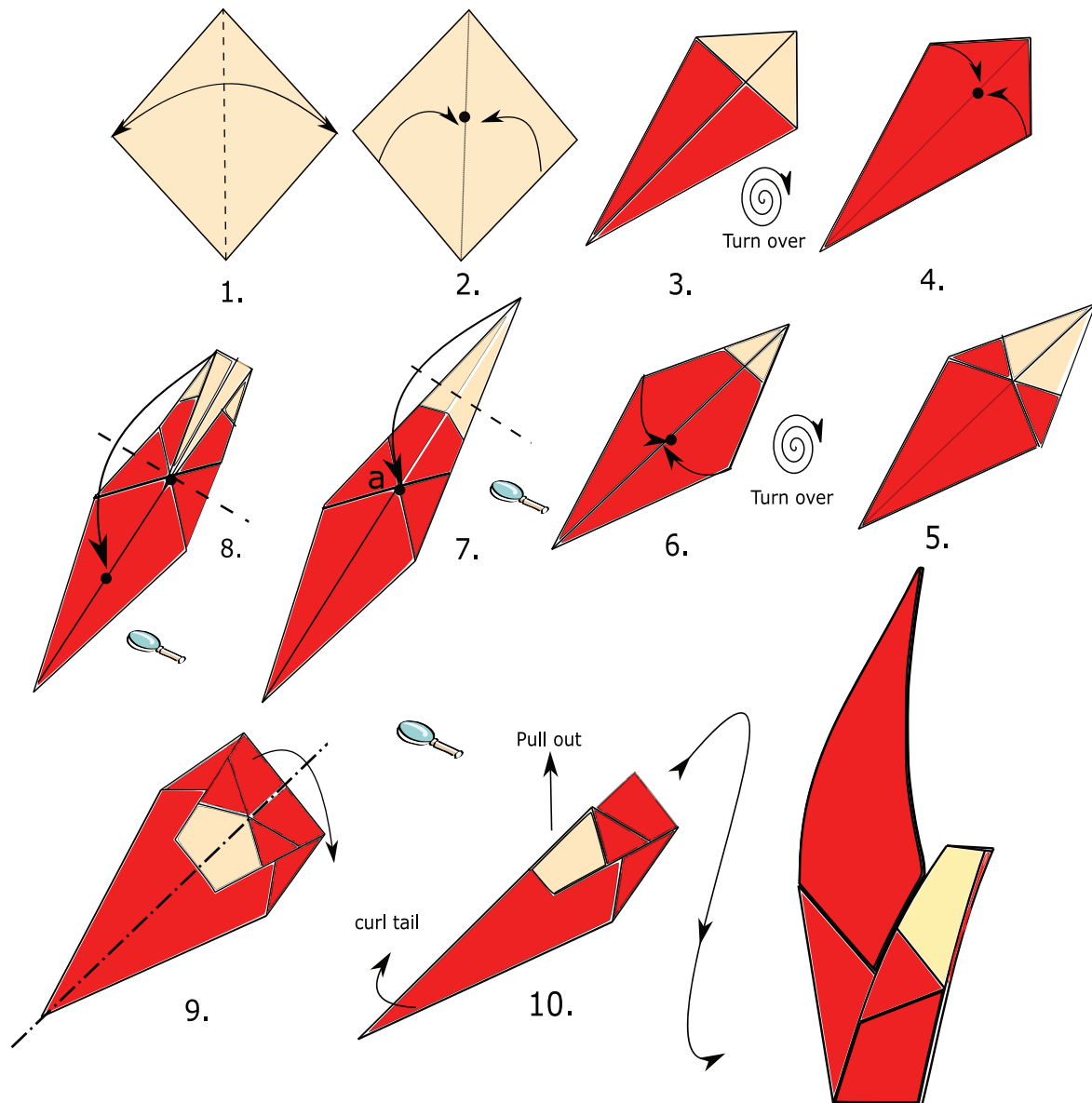
How to cut the paper

1. Take a single sheet of A4 paper (21 cm x 29.7 cm). Red on one side and light brown on the other.
2. Hold the top left corner of the paper and fold it towards the lower right side. Bring it down until the paper forms into a right-angled triangle (Pictures A & B). Cut rectangle off in Picture B using paper scissors. You will have a square (21 x 21 cm) and a rectangle (21 x 8.8cm Approx.)



Note: The square in picture C will be used to make the squirrel's body and the rectangle left will be used to make the squirrel's head.

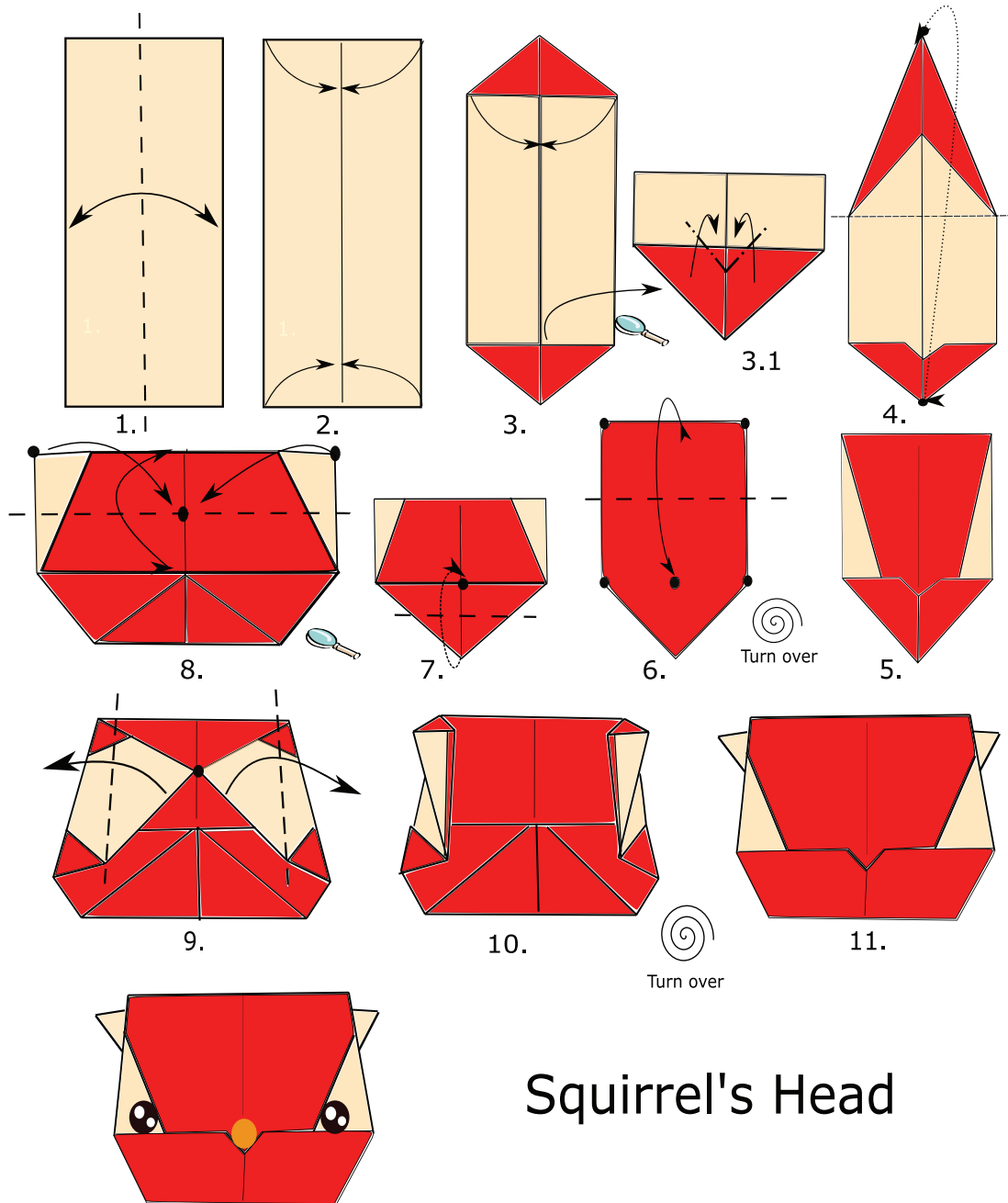
RED SQUIRREL'S BODY



Red Squirrel's Body

1. Fold then unfold to find the diagonal crease (red side colour down)
2. Fold the two lower edges to the vertical centre crease (making a kite shape)
3. This is the result. Now turn the paper over
4. Fold the two short upper edges to the centre crease (making it pointy at the top)
5. This is the result. Now turn the paper over and notice a small triangle at the top.
6. Fold the two upper edges to the centre crease
7. This is an enlarged version. Fold top tip to point **a**
8. Fold along the line (folding over until the intersection)
9. This is an enlarged version. Fold the model in half
10. This is the result. Reposition and complete the squirrel's body by pulling the neck out a little bit as shown in the last picture and curl or shape the tail. Well done!

RED SQUIRREL'S HEAD

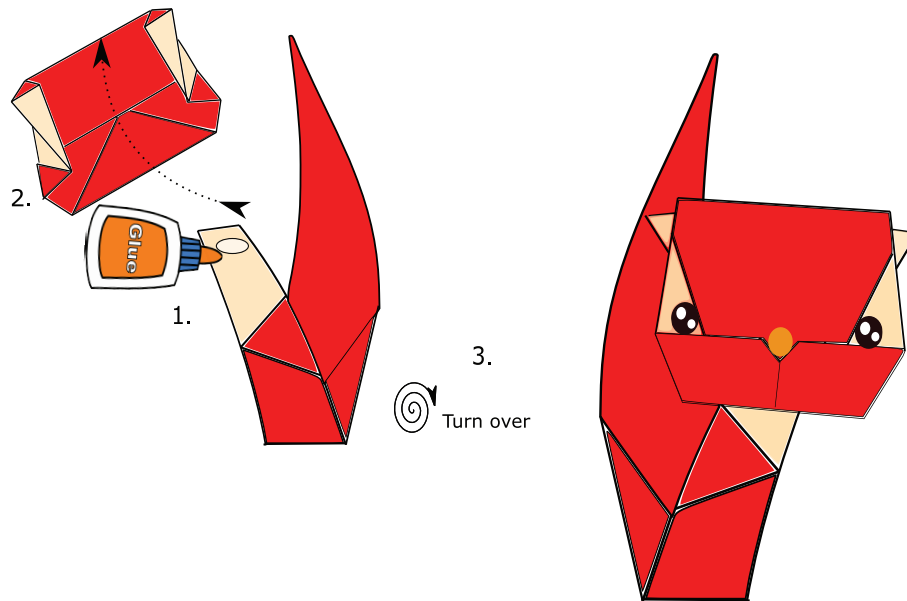


Squirrel's Head

1. Fold then unfold in half to find the centre crease (red side colour down).
 2. Fold the four corners to the crease in the centre
 3. Fold the two top corners to the centre crease. 3.1-Fold the bottom inner corners inside to form a very small triangle (this little triangle will become the space for the squirrel's nose).
 4. & 5. Fold the top tip along the line inside the bottom part as in the picture the result will be picture 5. Turn the paper over.
 6. Fold the top part down along the line just until the corners of the bottom triangle (indicated by dots)
 7. Fold the bottom triangle in half to the dot as in the picture.
- The next is an enlarged view
8. Fold then unfold the first layer to find the centre point and after fold the two upper corners with the dots to that centre point.
 9. To form the squirrel's ears fold the paper backwards along the lines as in the picture.
 10. & 11. This is how it should look. Now turn over to reveal the red squirrel face.
- Well Done!!!

Tip: If you want you could add eyes and a little nose to complete the red squirrel face, you could also add shine to the eyes by adding two dots using a white pen.

ATTACHING THE SQUIRREL HEAD & BODY



1. Apply a small amount of glue on both sides of the top of the squirrel's neck
2. Insert the neck inside the back of the squirrel head and press in place
3. Turn over to reveal the completed squirrel

You can find the video tutorial on our YouTube Channel **Origami Pulse CIC**

Please send your Red Squirrel to **origamipulse@gmail.com** and share it on social media with the hashtag **#myorigamiredsquirrel**

Engaging in a mindful activity like Origami to make the Red Squirrel will help to keep them in focus and raise awareness on conservation. Practicing Origami could also help your wellbeing.



Did you Know that Red Squirrels?

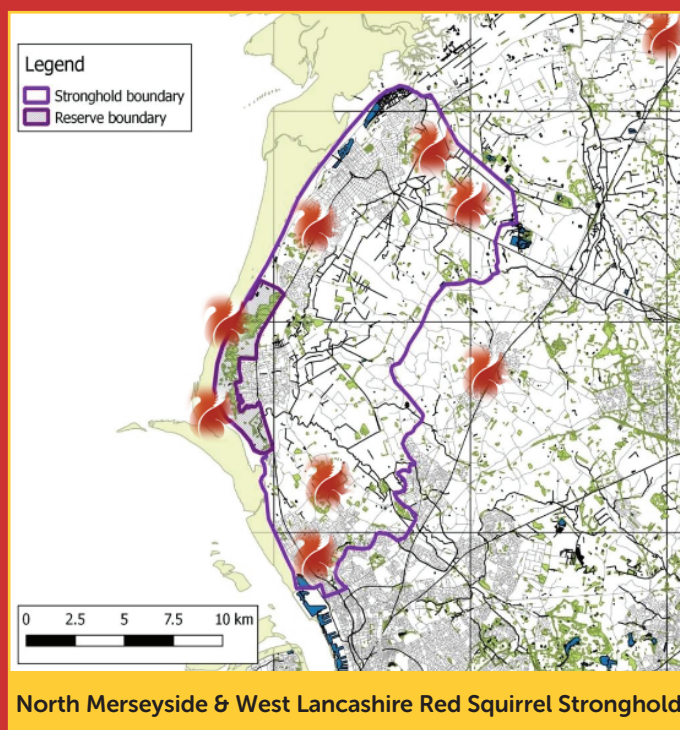
- Can swim well
- Can jump more than 2m and survive a fall of more than 12m without injury
- They can find buried food underneath a foot of snow
- They do not hibernate
- They live for around 7 years
- One of Beatrix Potter's most well-loved characters, Squirrel Nutkin, is a red squirrel

Map displays Red Squirrel stronghold in Formby with isolated colonies in woodlands and surrounding area.

Without conservation, Red Squirrels could become extinct in England in approximately 10 years.

Time is running out.

In response, this project was originated by **Zulay Newell**, a local Southport Origami enthusiast and one of the directors of the social enterprise **Origami Pulse CIC**.



You will be able to reproduce the Origami Red Squirrel at home and share your creations as presents for family and friends. This will help to raise consciousness and promote stronger communities.

By making the Red Squirrel with the instructions enclosed in this leaflet or by watching the video tutorial, you will not only raise awareness, but you will also enjoy the therapeutic benefits of Origami.

For Squirrels Conservation

Website: www.lancswt.org.uk

Email: red.squirrel@lancswt.org.uk

Twitter: @Lancswildlife

Facebook: **Merseyside and Lancashire Red Squirrel Project**

For Origami Information

Website: www.origamipulse.com

*You can download resources from our website, for example, the booklet **Get started with Origami**

Email: origamipulse@gmail.com

Twitter: @origamipulse

Facebook: **Origami Pulse CIC**



Photography: Paul Harry Photography
Graphic Design: Steven Kitchen